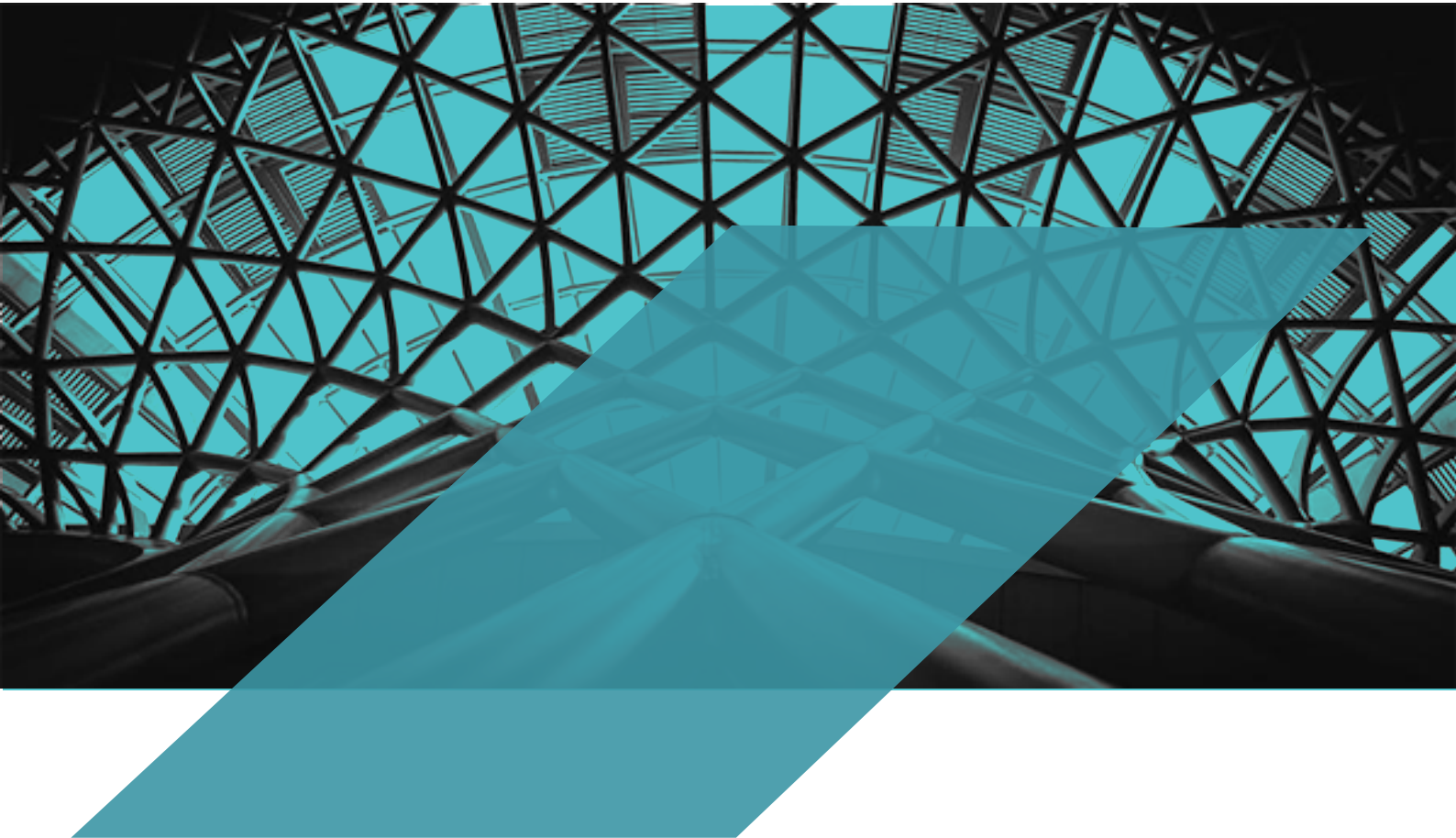




KGPS MECHANICAL.PVT.LTD

(ESTD : 2008)



First Floor, Padmashree Complex,
Opp Kotakmahindra bank,
Dahej By – Pass road, Buharuch – 392 001, (Gujarat)
Tel No: 091- 2642 239196

PRELUDE

Our concept is professionally framed by a team of dedicated young and enthusiastic engineers along with efficient frontline staff and has gained the art of excellence in implementation of project and touched the art of many major clients in accuracy and promptness in completion of work.

MAJOR AVENUE

- Shop Fabrication – Structural & Equipment.
- All type of Site Fabrication & Erection of Storage Tanks, Structure & Piping (Utility, Process & Cross Country).
- Equipment Erection & Commissioning.
- Electrical & Automation work.
- Specialized in Material Handling System. (Pipe Conveyor)
- All type of Plant Maintenance & Operation Work.

QUALITY POLICY

We shall always strive to good Quality at the most competitive cost in time to deliver and assured customer satisfaction.

We will continue our endeavor in this direction and bring better quality through updated and improved workmanship in a safe environment.

LIST OF KEY PERSONNEL

MR. P. SUBRAMANIAN
FOUNDER & MANAGING DIRECTOR

Having 25 years of rich experience in Industrial Engineering , responsible to achieve overall business objective by continuously improving services, developing skills & deploying new technologies & working closely with customers. Provide leadership & direction for many challenging project executions with prestigious customers.

LIST OF KEY PERSONNEL

MR. P. SANTHOSH
DIRECTOR – RESOURCE PLANNING

Having 19 years of industrial experience in planning, shop floor execution & sound technical team building. Has vast experience in construction field & executed many prestigious projects in stipulated time frame..

KEY RESPONSIBILITIES : RESOURCE PLANNING

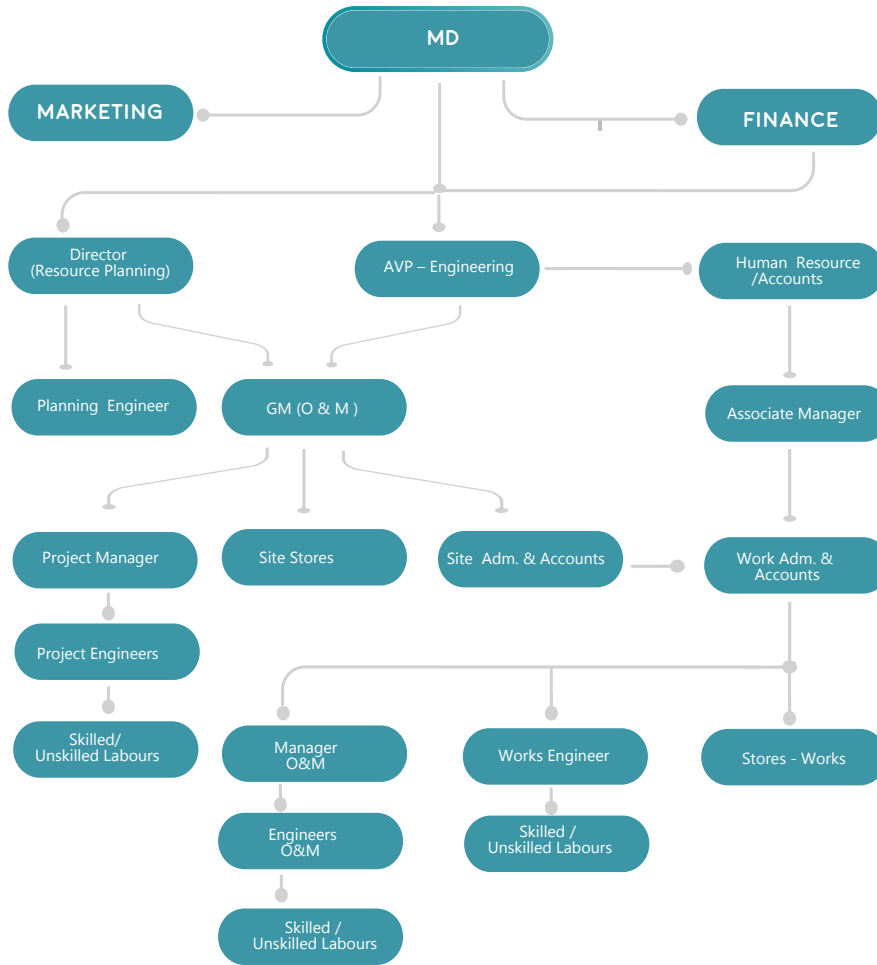
LIST OF KEY PERSONNEL

MR. A.G.NAIR
AVP- CONSTRUCTION

His career spans more than 27 years in industrial project execution. Executed many challenging projects in India & abroad. Having vast & specialized experience in executing turnkey projects & Construction field.

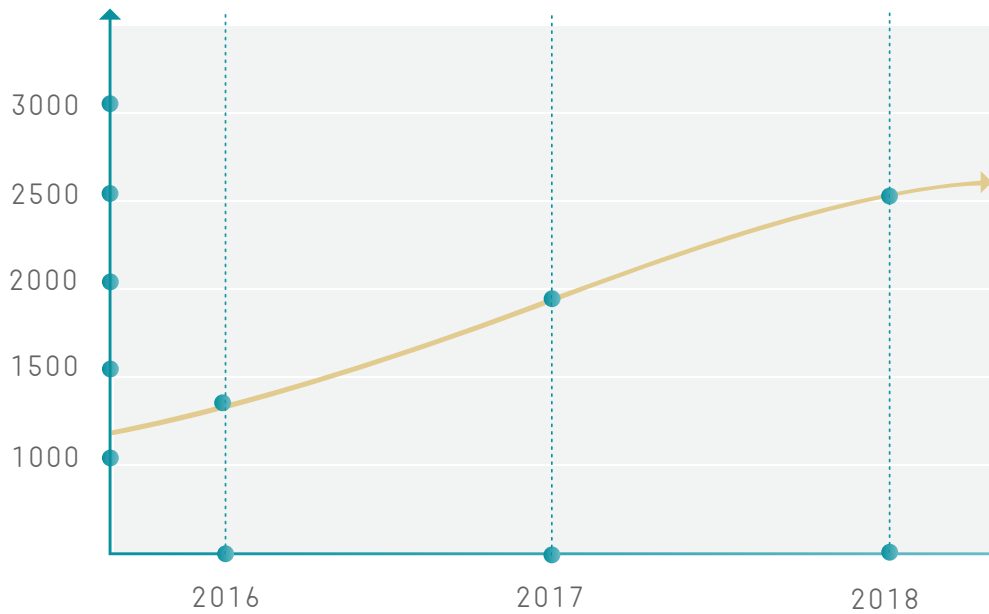
KEY RESPONSIBILITIES : HEAD OF CONSTRUCTION

ORGANIZATION CHART

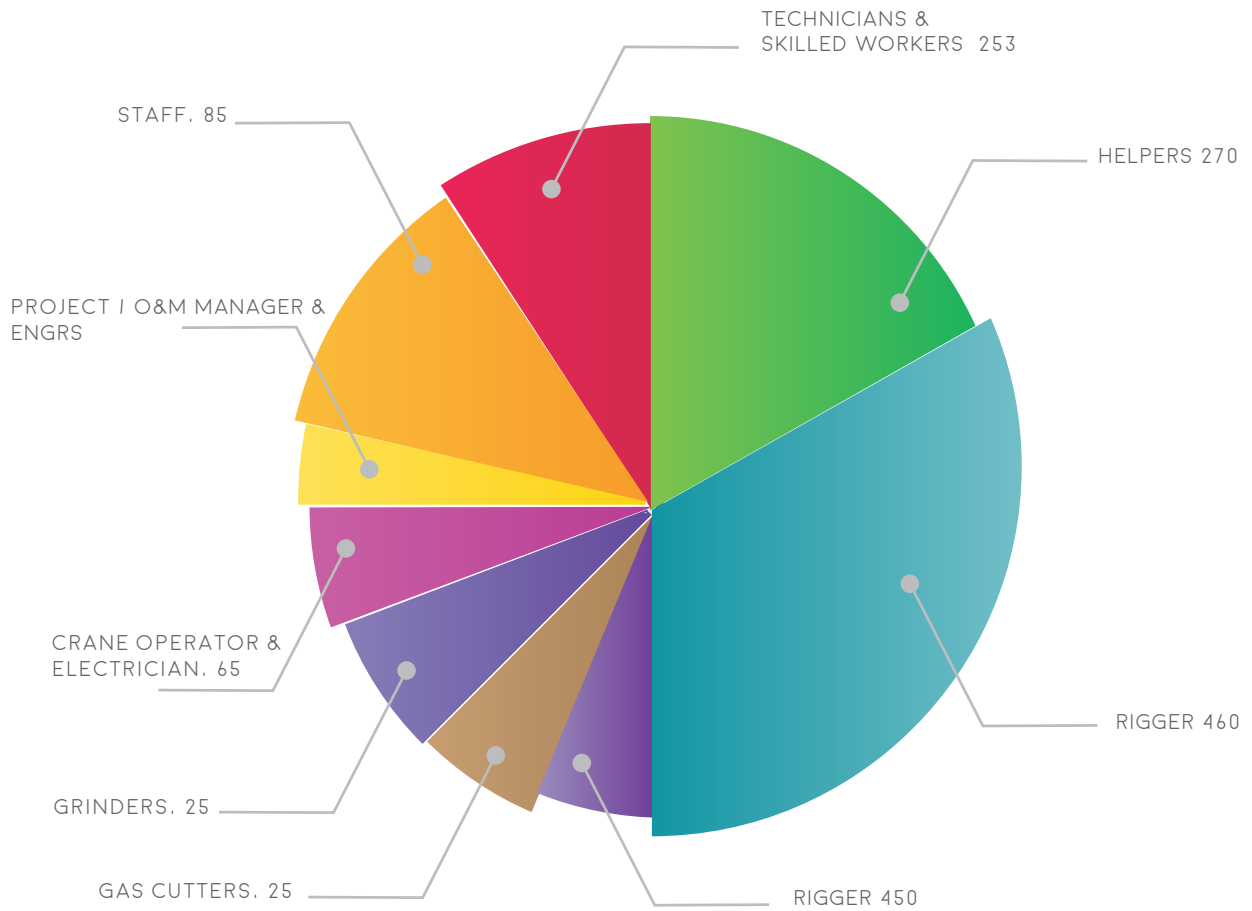


PHENOMENAL GROWTH SINCE 2016

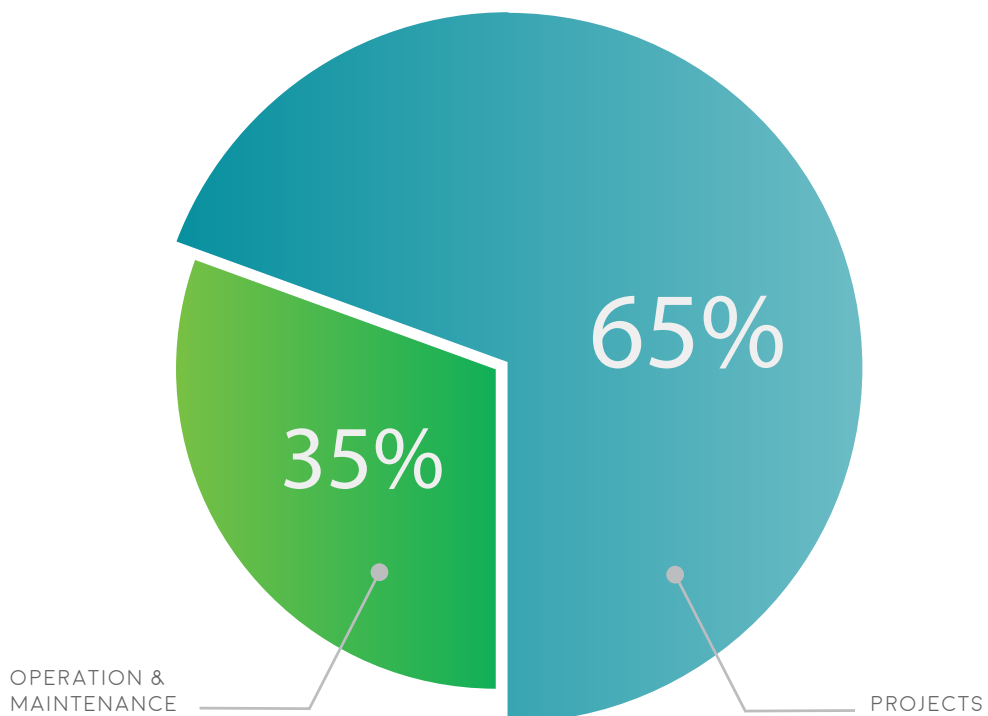
Projected Turnover of INR 2500 Lacs for 2018



STRENGTH AREAS (MANPOWER)



WORK CONTRIBUTION



RESOURCES

HYDRAULIC CRANE (55 & 120 MT)	:	01 EACH.
HYDRA (16/14/12 & 11MT)	:	15 NOS.
DG SET (125 & 75 KW)	:	06 NOS.
AIR COMPRESSOR	:	04 NOS.
WELDING RECTIFIER (600 & 400 AMPS)	:	250 NOS.
DRILLING MACHINE (UP TO 50MM CAP)	:	25 NOS.
PLATE BANDING MACHINE (36MM CAP)	:	05 NOS.
ERECTION TOOLS	:	LOT
STEEL CONTAINERS	:	15 NOS.

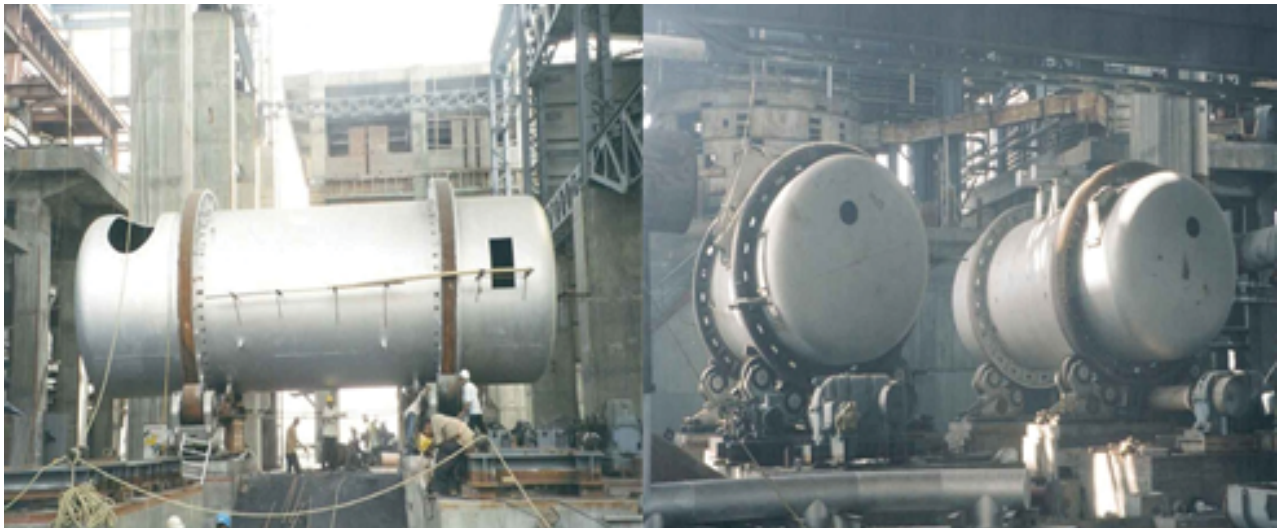
SUCCESSFUL PROJECTS



GAS LINE PIPING WORK AT GPPL RAJULA



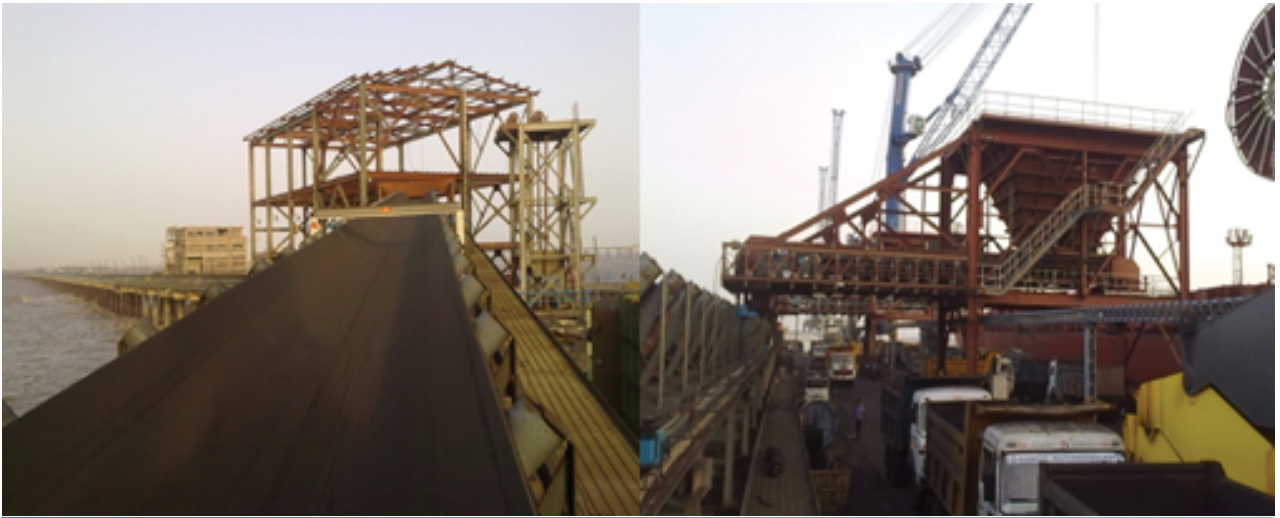
PIPE CONVEYER AT BIRLA COPPER



ANODE FURNACE AT BIRLA COPPER



LIME STONE HANDLING SYSTEM AT SCL PORBANDAR



LONG CONVEYOR & MOBILE HOPPER AT ADANI DAHEJ



LIME STONE HANDLING SYSTEM AT SCL PORBANDAR



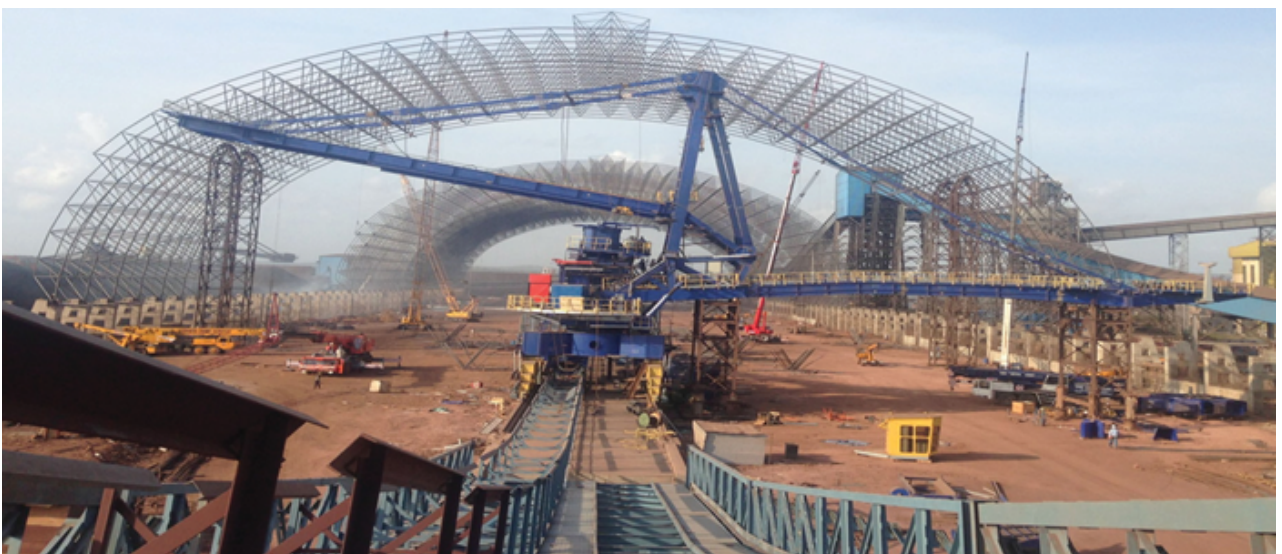
LONG CONVEYOR & MOBILE HOPPER AT ADANI DAHEJ



LIGNITE HANDLING SYSTEM AT GIPCL. KIM-SURAT



FAB. & ERECTION OF HST TANK AT ANRAK ALUMINIUM – VIZAG



CONVEYOR & STACKER RECLAIMER AT JSW- JAIGARH PORT LTD. RATNAGIRI



PIPE CONVEYOR SYSTEM FOR IMWLS AT SWPL- GOA



PIPE CONVEYOR AT- SOUTH WEST PORT LTD. GOA



ASSEMBLY, ERECTION & COMMISSIONING OF SCREW TYPE SHIP UNLOADER AT TPCL, MUMBAI



FABRICATION OF CONVEYOR STRUCTURE AT ADANI PORT PVT LTD. . DAHEJ



FABRICATION OF VERTICAL KILN AT NIRMA LTD. - BHAVNAGAR



VIBRATING SCREEN ERECTION AT BIRLA CELLULOSIC. KOSAMBA

PROJECTS RECENTLY COMPLETED

CLIENT	TYPE OF JOB	QUANTITY (APPROX)	VALUE (IN LACS)
JSW – SOUTH WEST PORT LTD, GOA	Fabrication, Erection & Commissioning of Pipe Conveyor from Jetty to Silo including Equipment for In Motion Wagon System at SWPL – MPT – Vasco-Goa	1800 MT	600 Lacs
ADANI MURMUGAO PORT TERMINAL PVT LTD, GOA	Assembly, Erection and Commissioning of Conveyor structure and Equipment for Silo Loading System. Vasco-Goa	1700 MT	275 Lacs
KORBA WEST POWER COMPANY LTD. (RAIGARH)	Erection & Commissioning of Equipment of Pipe /Conversional Conveyor from Loading Point to Bunker House (500 MW Plant 2 Nos) at KWPL.	3000 MT	360 Lacs
JSW- JAIGARH PORT LTD, (RATNAGIRI)	Structural Fabrication, Erection & Commissioning of Conveyor system for Covered Coal Shed including of detailing of Drawing.	1000 MT	235 Lacs
GRASIM INDUSTRIES LTD, VILAYAT (GUJ.)	Structural Fabrication ,Erection and Piping work (CS/SS) at GIL – Vilayat.	2000 MT	600 Lacs

ON GOING OPERATION & MAINTENANCE ACTIVITY

CLIENT	TYPE OF JOB	DURATION	VALUE (IN LACS)
THYSSENKRUPP INDUSTRIES LTD RIL – DAHEJ	Comprehensive Maintenance Job for Coal Handling System for at Reliance Industries Limited – Dahej.	1 Year	500 Lacs
HINDALCO INDUSTRIES LTD (UNIT : BIRLA COPPER)	MHS From Jetty to Plant Approx 4.2 km, Cap. 2400/TPH. CPP (MHS) from Yard to Bunker Mechanical Maintenance, Maintenance of Copper III Furnace, Other Plant Maintenance Activity & Shutdown Works. Since – 2006	1 Year	255 Lacs
BIRLA CELLULOSIC , KOSAMBA (GUJ.)	CHP CS2 & AXILLERY Plant Repairing, Maintenance & Shutdown Works. Since – 1996	1 Year	210 Lacs

ON GOING OPERATION & MAINTENANCE ACTIVITY

CLIENT	TYPE OF JOB	QUANTITY (APPROX)	VALUE (IN LACS)
FLSMIDTH – RSPL - DWARAKA	Fabrication, Erection and Testing of Brine Settler, Day Bin and MHS Package at RSPL – Dwaraka Since 2016.	2000 MT	800 Lacs
NIRMA LIMITED - BHAVNAGAR	Supply, Fabrication, Erection and Commissioning of Bunker House at Nirma Limited – Bhavnagar. r Plant Maintenance Activity & Shutdown Works. Since – 2006	150 MT	255 Lacs

ACHIEVEMENTS



CERTIFICATE OF APPRECIATION



OUR CUSTOMERS

PRINCIPAL CUSTOMER



CUSTOMERS



THANK YOU..!